

# Nursing Research and Collaboration Center



岐阜県立看護大学  
GIFU COLLEGE OF NURSING

## Aim at the Qualitative Improvement of Nursing Services and Aid in Wide-Ranged Lifelong Learning

Gifu College of Nursing was founded in 2000 as a higher education institution for the science of nursing. The college aims to contribute to the qualitative improvement in nursing services within Gifu Prefecture. The objective of the science of nursing is to provide a scientific grounding for the professional activities that public health nurses, midwives, and clinical nurses are engaged in, in addition to formulating theoretical systems for considering potential problems within the field. To this end, the college engages in essential and systematic research, focusing on nursing practices and events in many directions.

At the time of its inception, the college also developed the Nursing Research and Collaboration Center. The aim of the center was to enable the college to work together with local health care institutions and to conduct joint research based on practical nursing studies that enhance the quality of nursing provision.

To date, the Nursing Research and Collaboration Center has collaborated with nurses active in the front line of health care, as well as laying a solid foundation for the college's operation with the aim of improvement within nursing practices in Gifu Prefecture. Under the supervision of the college, the center is taking leading roles in the following main projects: The "Collaborative Research Project," which engages nurses in active services with the aim of exploring more effective and qualitative methods for nursing service; the "Nursing Practice Research Promotion Project," which runs a nurses' workshop and study training with the aim of encouraging nurses' self-study and the improvement of their job sites; the "Support for the Academy of Nursing Practice Research," which supports the Gifu municipal research project; and the "Support for Graduates," which runs an interactive session for graduates.

Having now passed the 15th anniversary of its establishment, the college finds itself entering a new era. For the forthcoming 20th, 30th, and subsequent anniversaries, the college should devote itself to further development. The Nursing Research and Collaboration Center should also work on steadily promoting the collaboration with the nurses in Gifu Prefecture, with a vision of improvement within the nursing service.

The Nursing Research and Collaboration Center makes it its business to offer a forum for in-depth philosophical discussion regarding how to best meet the nursing needs of the present day, and how to support everyone's healthy life.

Director  
Okumura Minako

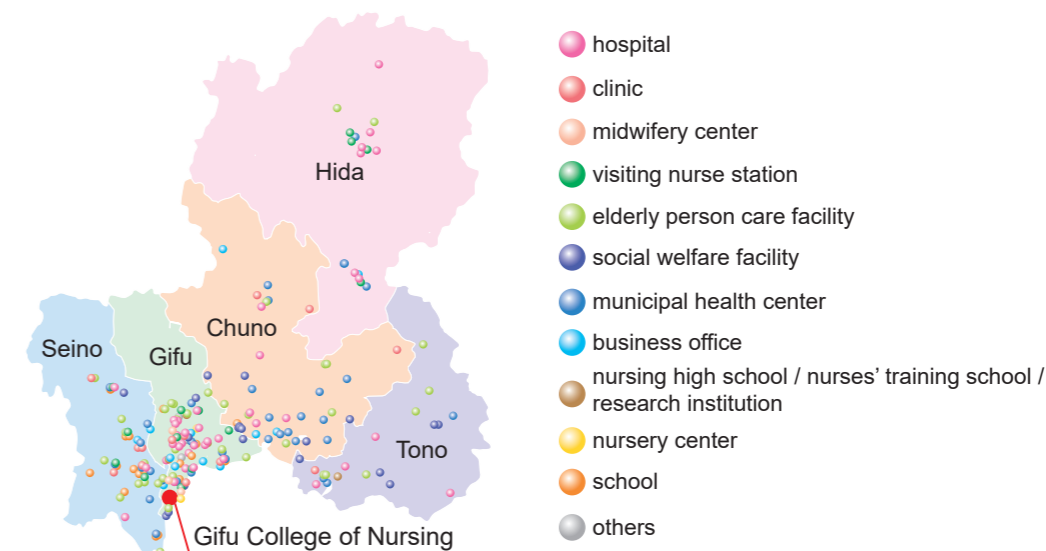
## Collaborative Research Project

Our faculty researchers, together with nursing professionals in Gifu Prefecture, have been engaged in research activities that are closely related with daily nursing service since the establishment of the college. With the aim of improvements and reform in nursing service, we adopt a scientific method and work together in research at the nursing site. As the two groups (faculty researchers and nursing professionals) come from different circumstances with different points of view, which is advantageous to both sides for obtaining access to unfamiliar nursing facts and events, we attach the utmost importance on our cooperation based on equality.

Furthermore, through the processes of collaborative research, the college also intends to support nurses' lifelong learning and development.

The state of collaborative research (as of June 30, 2022)

The number of research topics (total, 2000-2022)	501
The number of participants (total man-days, 2000-2022)	3,111



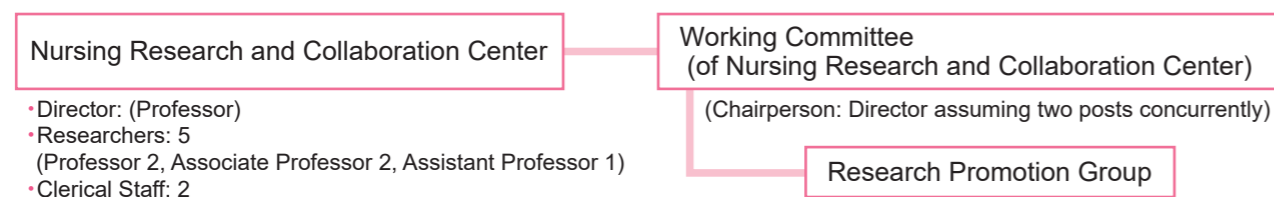
The geographical distribution of institutions (in Gifu Prefecture) engaged in "collaborative research" with Gifu College of Nursing

### Collaborative Research Discussion Meeting

To review the processes of collaborative research and share the outcomes with participants, we hold a meeting on the third Saturday in February every year. The meeting starts with reports for each study, followed by lively discussions around the poster presentations and the exchange of opinions. It has proven very worthwhile so far, in that the members can listen to outside ideas.



### The Organization of Nursing Research and Collaboration Center



The Nursing Research and Collaboration Center's activities are based on the college's doctrine and objectives and follow the decision of the Working Committee. The center always works in cooperation with the Research Promotion Group, a subordinate office to the committee.

## Nursing Practice Research Promotion Project

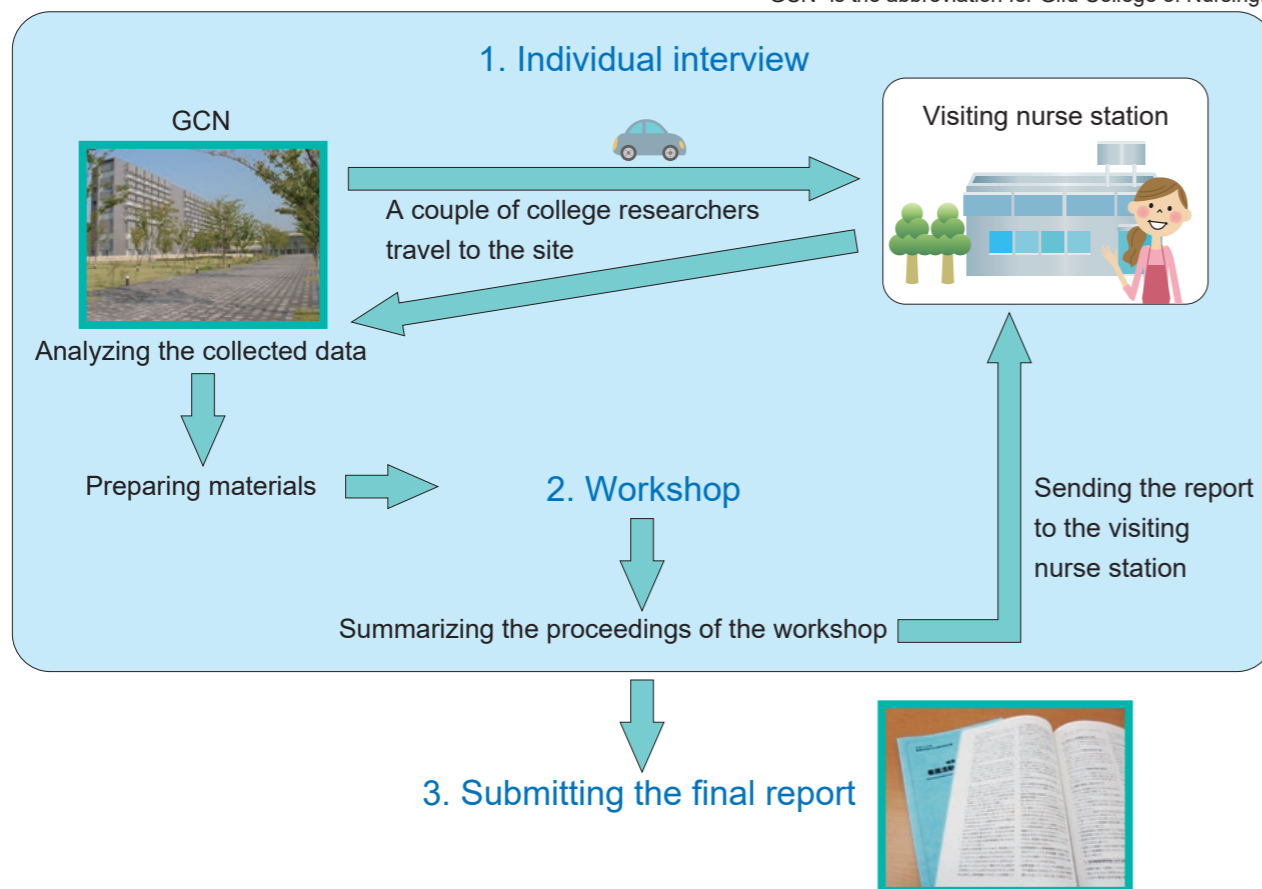
This project aims to promote lifelong learning in the nursing profession. Our college recognizes the importance of nursing professionals reviewing and reconsidering their own nursing sites, which leads to the improvement of work conditions. The college researchers go to the nursing site, assess the situation, and determine the type of training or method of guidance appropriate to each case.

### <Case Study>

Title	Improvement and Expansion of Visiting Nurse Station Activity
Aim	To investigate the present situation in a visiting nursing station, determine a research topic, and construct a model for solving the problem.
Content	1) Individual interviews at the nursing site: Our college researchers visit the visiting nursing station, gather information, and exchange opinions with the nurses to improve or upgrade nursing practice. 2) Workshop: Nurses who have received in-service training meet together and discuss any topics provided from the college researchers' report. <i>(See the outline below)</i>

### Outline for Guidance on Nursing Practice Research

"GCN" is the abbreviation for Gifu College of Nursing.



### Comments from workshop participants

- I understand that others also share similar problems to mine. I feel that I am not alone in experiencing difficulty.
- It is a good opportunity to learn how other facilities deal with a problem or figure out how to use a device.

## Support for the Academy of Nursing Practice Research

In this project, our college aims at encouraging local nursing professionals to individually develop research skills and action for improvement.

The college is now working on two supportive activities: one is to provide support for nursing practice research that the members are involved in, and another is to offer support for the “Interactive Meeting of the Academy of Nursing Practice Research.”

### Our college's involvement

The role of the college in this project is to aid the members of the “Academy of Nursing Practice Research” who are responsibly solving problems in nursing practice with the support of our college researchers.

The conditions of involvement are that the research project is worked on independently by the member, is directly related to improvement in nursing practice, and the project should be completed with some advice or discussion.

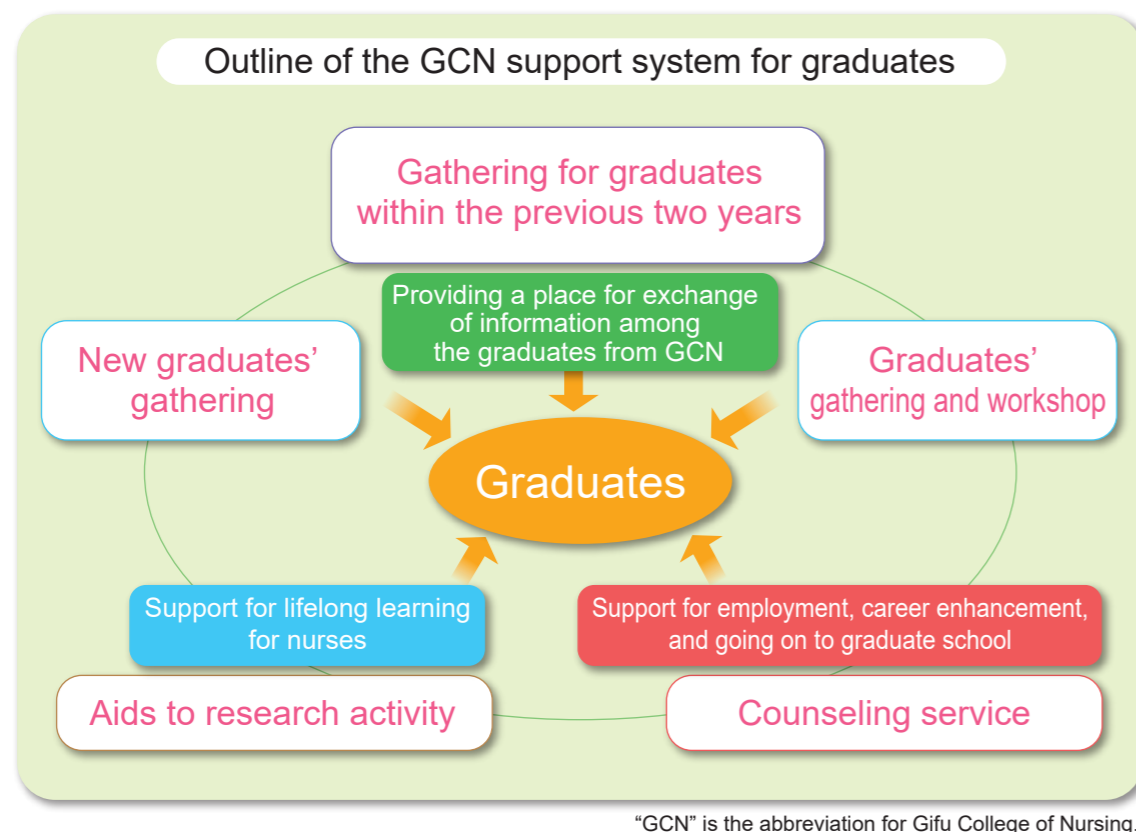
### Interactive Meeting of the Academy of Nursing Practice Research

- The general meeting is held once a year.
- Anyone can join the meeting, in addition to the members of the “Academy of Nursing Practice Research.”
- In the meeting, there are some presentations by the members who have received assistance, as well as discussions that include changing perspectives and advice for further study.
- Some nursing practice reseashes are presented by nurses with master degree (Master of Nursing Science) from Gifu College of Nursing, and are discussed.



## Support for Graduates

Our college continues to offer a support system for all graduate nurses from Gifu College of Nursing so that they can feel free to discuss career development or worries and troubles at work. Providing ongoing support is also an important role of the Nursing Research and Collaboration Center.



### New graduates' gathering

This is a meeting for new graduates who have just started working, where they can exchange views and talk about worries and troubles at work with their contemporaries at the college.

### Gathering for graduates within the previous two years

This is a meeting for those who have graduated within the past two years. This meeting is to be held at the same time as the meeting for new graduates.

### Graduates' gathering and workshop

This is a meeting for all graduates to be refreshed by talking freely with teachers and other graduates about their experiences at work. On the same day, a workshop for all graduates is held to support the improvement of their career.

### Aids to research activity

This is a support system for graduates who are involved in research activities at nursing sites. The system is based on the one for members of the "Collaborative Research Project" and the "Gifu Nursing Practice Research Promotion Project."

### Counseling service

This service offers individual consultation for graduates to freely discuss troubles at work, career enhancement, and going on to graduate school. They can expect pertinent advice from teachers.



## Some Introductions of Research Achievements

The researchers in the Nursing Research and Collaboration Center are engaged in research activities with the faculty. The following are the achievements of the work supported by the "Grants-in-Aid for Scientific Research."

"A Study on University Infrastructure and Systems Related Closely to Its Contribution to Community" (No. 16390652)

2004-2007 Grant-in-Aid for Scientific Research (B)

Principal Investigator: Hirayama Asako, Director (of the Nursing Research and Collaboration Center)

The purpose of this study is to explore how nursing universities/colleges are related to the local communities from the perspective of their contribution to community and society. The study includes research on the actual conditions of some universities, discussion relating to how to build the basis of education research, and an examination of the appropriate relationship between universities and the local institutions.

To find an appropriate method of clarifying both what service the science of nursing should offer to a community and how nursing contribution should be expanded, we review the Gifu College of Nursing research system, which is applied to the "Collaborative Research" and "Nursing Practice Research Promotion" projects. Adopting the Gifu College of Nursing system, we examine what effects the practical training has on the nursing site, and what the nursing profession in Gifu Prefecture asks of Gifu College of Nursing. Finally, we confirm different aspects of their needs.

"Development of Nursing Practice Skills within Graduate Nurses and a Support Program for Their Lifelong Learning" (No. 23593163)

2011-2014 Grant-in-Aid for Scientific Research (C) Principal Investigator: Iwamura Ryuko, Professor

In this study, three surveys were conducted.

First, by following nurses' three-year nursing practice after graduation, we examined how the graduate nurses gained further skills at work.

Second, we sent respondents a questionnaire comprising the following questions related to the acquisition of nursing skills: "What do you think about your creative ability and problem-solving?"; "With the skills you have, how will you tackle a problem in the near future?"; and "Do you think that the education you received, both at school and work, is of use?"

Third, for the purpose of understanding the graduate nurses' needs for developing ability, we analyzed the status quo of their workplace and education.

On the basis of the research results, we developed a support program for graduate nurses' lifelong learning, within which the college and workplace would act collaboratively.

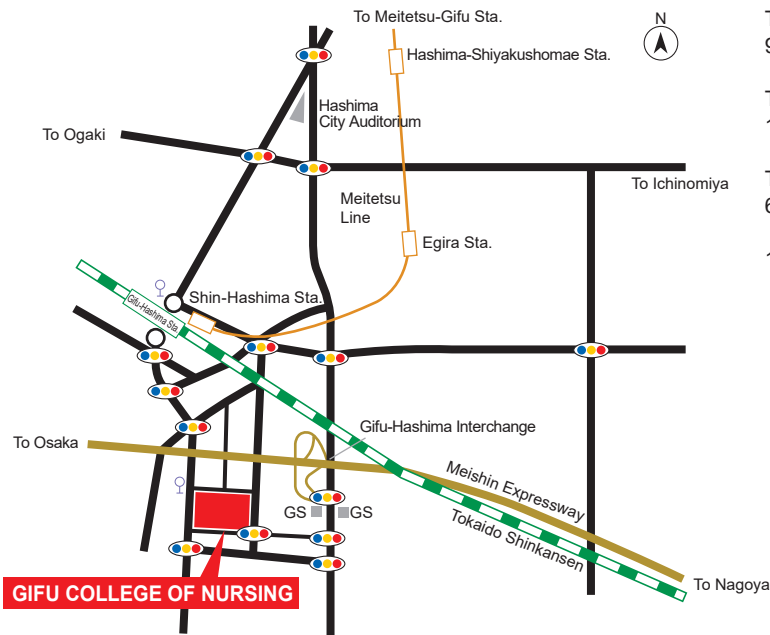
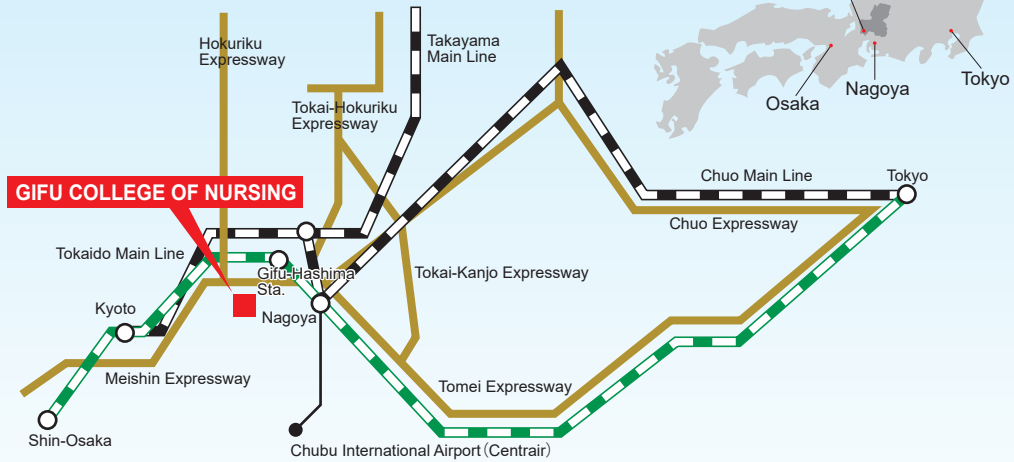
The publication of the Nursing Research and Collaboration Center

*The Bulletin of the Collaborative Research*: Vol. 1 (2000) -18 (2017).

*The Bulletin of the Nursing Practice Research Support Work*: Vol. 1 (2001) – 17 (2017).

# Access Map

## Railway route map



Time required from Chubu Int'l Airport  
90 minutes via Meitetsu Line

Time required from Tokyo  
120 minutes via Shinkansen

Time required from Osaka  
60 minutes via Shinkansen

15 minutes walk from Gifu-Hashima Station

Contact us  
**GIFU COLLEGE OF NURSING**  
 NURSING RESEARCH AND COLLABORATION CENTER  
 3047-1 Egira-cho, Hashima-shi, Gifu-ken, 501-6295, Japan  
 PHONE & FAX: +81-58-397-2326  
<http://www.gifu-cn.ac.jp>  
 E-mail: [nccenter@gifu-cn.ac.jp](mailto:nccenter@gifu-cn.ac.jp)